

Red Data List of Derbyshire's Vascular Plants



Moyes, N.J. & Willmot, A.

Derby Museum & Art Gallery
2009

Contents

1.	Introduction	Page 2
2.	Red Data List Categories – What’s Included?	Page 3
3.	What’s Not Included?	Page 4
4.	Conclusion & Recommendations	Page 4
5.	Table 1 List of Category 1 Plants	Page 5
6.	Table 2 List of Category 2 Plants	Page 5
7.	Table 3 List of Category 3 Plants	Page 7
8.	Table 4 List of Category 4 Plants	Page 8
9.	Table 5 List of Category 5 Plants	Page 9
10.	Table 6 List of Category 6 Plants	Page 11
11.	References	Page 12
	Appendix 1 History of Derbyshire Red Data Lists	Page 13
	Appendix 2 Assessing Local Decline	Page 15
	Appendix 3 Full List of Derbyshire Red Data Plants	Page 18

CITATION:

Moyes, N.J. & Willmot, A. (2009) *Red Data List of Derbyshire’s Vascular Plants*. Derby Museum.

1) Introduction

County Rare Plant Lists – or Red Data Lists – are a valuable tool to identify species of conservation concern at the local level. These are the plants we should be most concerned about protecting when they are still present, or looking out for if they seem to have declined or become extinct in the locality.

All the species named in this Red Data List are **native vascular plants** in the area, and they either:

- have a **national conservation status** in the UK,
- or are **rare in Derbyshire**,
- or have exhibited a **significant local decline** in recent times,
- or have become **locally extinct**.

The **geographic area** in the definition of Derbyshire used here includes:

- the modern administrative county of Derbyshire,
- the City of Derby
- the historic botanical recording area known as the “vice-county” of Derbyshire (VC57). (Note: Some parts of this vice-county now fall within other county administrative areas, but so far just one species is known only from such an area, *Trientalis europaeus*, at Houndkirk Moor, now in West Yorkshire.)

The list contains 244 species, which are listed in their **individual categories** in Tables 1 to 6. A **full list of all Derbyshire Red Data plants** is given in alphabetical order in Appendix 3.

This revision replaces a previous Red Data plant list produced in 2002 (see Appendix 1). The selection process we have used now closely follows modern national guidelines on preparing County Rare Plant Registers, devised by the Botanical Society of the British Isles (Lockton, Whild & Pearman, 2005). This enables better direct comparison of our list with those of other regions.

In following these guidelines we now consider any species to be “**locally extinct**” if it has not been formally recorded in Derbyshire since the start of 1969. This was the year in which the last Flora of Derbyshire was published (Clapham 1969). It should be noted that “extinction”, is really only a hypothesis, not a fact. We can assert that a species is locally extinct until we rediscover it in one of its former sites, or find it growing somewhere new. We choose a cut-off of 1969 for practical convenience; a different date would result in different numbers of species being listed.

We have attempted to identify **significant local decline** by an analysis of records held over a 42 year period. That selection was made using a dataset of 700,000 plant records held by Derby Museum’s Biological Records Centre in October 2008.

This document and future revisions can be downloaded at www.derby.gov.uk/flora, where maps, statistics and either draft or final written accounts of every wild plant in the county can be found. It is a goal of the Derbyshire Flora Group to produce a full County Rare Plants Register, listing all sites for these species in the near future so as to aid understanding and monitoring of our rarest and most important plants.

2) Red Data List Categories – What’s Included?

Plants have been placed into one of seven categories, as recommended by the Botanical Society of the British Isles (Lockton, Whild & Pearman, 2005)

Categories 1 - 3 are based on national statuses (IUCN, 2001)

Categories 4-7 are based entirely on analysis of our own local data, but selection still follows national guidelines.

There are many examples where a species could potentially have been placed in more than one category, but it will only be listed here in the highest and most important category, with “1” being the most significant and “7” the least.

The categories are:

Category 1	Internationally Rare <i>(endemic, restricted international distribution, listed in Cheffings & Farrell 2005)</i>	2 taxa	see Table 1
Category 2	Nationally Threatened <i>(all IUCN categories CR=Critically Rare; EN = Endangered; VU = Vulnerable; and NT = Near Threatened)</i>	68 taxa	see Table 2
Category 3	Nationally Scarce <i>(NS = Nationally Scarce. Plants are listed on BSBI website. Accounts of most taxa are in Stewart et al (1994).)</i>	22 taxa	see Table 3
Category 4	Locally Rare <i>(Known in 3 or fewer Derbyshire sites (1km squares/monads) from 1969 onwards, and not in any category above)</i>	27 taxa	see Table 4
Category 5	Locally Scarce or Locally Declining <i>(Known in 4 to 10 sites from 1969 onwards, and not in a category above, OR thought to be exhibiting serious recent local decline.)</i>	90 taxa	see Table 5
Category 6	Extinct <i>(Any native taxon recorded in Derbyshire, but not found since 1968)</i>	35 taxa	see Table 6
Category 7	Alien Species of Particular Interest <i>(None selected)</i>	0 taxa	

A full alphabetic list of all Derbyshire Red Data Plants is given in Appendix 3 (page 18), where the following information is presented for each species:

- **Scientific Name**
- **Common Name**
- **Derbyshire Red List Category**
- **Category Detail** (if applicable)
- **Latest Year**
- **Monad count post-1986**
- **Comment:** (e.g. if a species with a national status also exhibit local rarity/decline)

Any national or local subdivisions of the main Categories are indicated in “**Category Detail**”. At the Derbyshire level, Category 5 can be divided into:

Category 5a, Locally Scarce = native species in 4 to 10 monads in Derbyshire since 1969 (based on an analysis of data held on the DBRC Flora database at Derby Museum at October 2008)

Category 5b, Locally Declining = native species showing a significant decline between two adjacent 21 year periods: 1965-1986 versus 1987-2008 (see Appendix 2 for explanation of methodology)

“**Comment**” is used to indicate what the local status would have been had not that species also had a national or international status, so entitling it to a higher category rating. This is useful in showing whether or not a nationally threatened or scarce plant is also rare or has been declining in Derbyshire, too.

3) What's Not Included?

1. **Category 7 plants.** Although national guidelines invite suggestions for non-native species of particular local interest, we are unable at this time to recommend any alien species of special local historical or cultural significance to Derbyshire.
2. **Priority UK BAP species.** (These are all captured within the existing IUCN designations)
3. **Local BAP species** (these statuses are considered too variable and liable to frequent change to be included in this work).
4. **Data Deficient taxa** – plants where not enough is known of their true national or local distribution. These are:
 - **Critical Groups** (e.g. microspecies of *Taraxacum*, *Rosa*, *Rubus*, *Hieracium*, *Euphrasia*, plus some *Aphanes* and *Sorbus*. - *except* where locally extinct)
 - **Hybrids** of native species (unless they exist on their own without nearby parents, e.g. *Ranunculus x kelchoensis*)

4) Conclusions & Recommendations

This revision of the Red Data List of Derbyshire's Vascular Plants is a significant step forward in identifying species of conservation importance in our county. It will not be the last. Inevitably it will become outdated as soon as more recording takes place, or whenever national plant statuses are reviewed. The list contains a significant number of extra species compared to the one prepared in 2002. This is a consequence of two things. Not only were a large number of species added to the national list of threatened plants in 2005, but our list now follows BSBI convention by using a much earlier cut-off date for a species being regarded as locally extinct. (i.e. 1969 as opposed to 1986). Appendix 3 on page 18 lists every species now on this local Red Data List, together with the year each was last formally recorded.

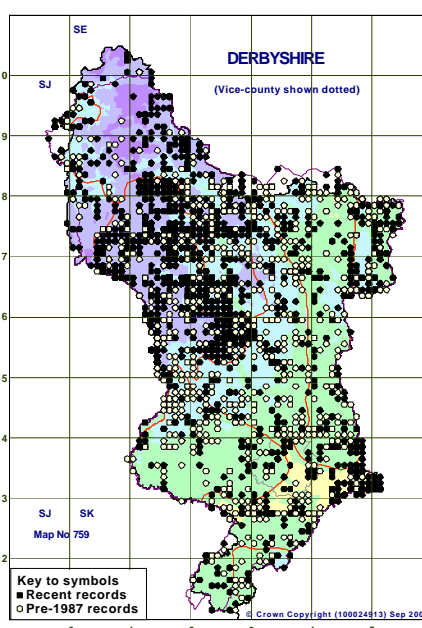
We recommend this list be adopted by the county's conservation organisations and used as a standard for species conservation and wildlife site selection.

Even though new sites and records are bound to come to light, we do not propose removing any species simply because the number of grid squares subsequently exceeds the original selection criteria. It is not feasible to undertake the entire review process annually, but ideally it should be reviewed for major changes every five years or so.

We based our selection upon plant data held at Derbyshire (Derby Museum) Biological Records Centre at October 2008. The map below shows the known distribution for all records of Derbyshire's Red Data List species, with a more detailed map shown on page 17.

*Fig 1. All Derbyshire RDB Plant Records
Symbol Size: 1km Background: relief*

See page 17 for data plotted at higher resolution.



5) Table 1. List of Category 1 Plants - Internationally Rare

Scientific Name	Common Name
<i>Luronium natans</i>	Floating Water-plantain
<i>Trichomanes speciosum</i>	Killarney Fern

6) Table 2. List of Category 2 Plants - Nationally Threatened

Scientific Name	Common Name	Derbyshire Red List Category
<i>Allium oleraceum</i>	Field Garlic	Cat. 2 Nationally Threatened
<i>Anagallis minima</i>	Chaffweed	Cat. 2 Nationally Threatened
<i>Anthemis cotula</i>	Stinking Chamomile	Cat. 2 Nationally Threatened
<i>Arabis glabra</i>	Tower Mustard	Cat. 2 Nationally Threatened
<i>Asplenium trichomanes ssp. pachyrachis</i>	a Maidenhair Spleenwort	Cat. 2 Nationally Threatened
<i>Baldellia ranunculoides</i>	Lesser Water-plantain	Cat. 2 Nationally Threatened
<i>Blysmus compressus</i>	Flat-sedge	Cat. 2 Nationally Threatened
<i>Cardamine impatiens</i>	Narrow-leaved Bitter-cress	Cat. 2 Nationally Threatened
<i>Carex ericetorum</i>	Rare Spring-sedge	Cat. 2 Nationally Threatened
<i>Carex ornithopoda</i>	Bird's-foot Sedge	Cat. 2 Nationally Threatened
<i>Chamaemelum nobile</i>	Chamomile	Cat. 2 Nationally Threatened
<i>Clinopodium acinos</i>	Basil Thyme	Cat. 2 Nationally Threatened
<i>Coeloglossum viride</i>	Frog Orchid	Cat. 2 Nationally Threatened
<i>Cynoglossum officinale</i>	Hound's-tongue	Cat. 2 Nationally Threatened
<i>Daphne mezereum</i>	Mezereon	Cat. 2 Nationally Threatened
<i>Dianthus deltoides</i>	Maiden Pink	Cat. 2 Nationally Threatened
<i>Euphorbia exigua</i>	Dwarf Spurge	Cat. 2 Nationally Threatened
<i>Euphrasia anglica</i>	an eyebright	Cat. 2 Nationally Threatened
<i>Euphrasia rostkoviana ssp. rostkoviana</i>	an eyebright	Cat. 2 Nationally Threatened
<i>Filago vulgaris</i>	Common Cudweed	Cat. 2 Nationally Threatened
<i>Galeopsis angustifolia</i>	Red Hemp-nettle	Cat. 2 Nationally Threatened
<i>Galeopsis speciosa</i>	Large-flowered Hemp-nettle	Cat. 2 Nationally Threatened
<i>Genista anglica</i>	Petty Whin	Cat. 2 Nationally Threatened
<i>Gentianella campestris</i>	Field Gentian	Cat. 2 Nationally Threatened
<i>Gnaphalium sylvaticum</i>	Heath Cudweed	Cat. 2 Nationally Threatened
<i>Groenlandia densa</i>	Opposite-leaved Pondweed	Cat. 2 Nationally Threatened
<i>Hieracium acuminatum</i>	a hawkweed	Cat. 2 Nationally Threatened
<i>Hieracium naviense</i>	a hawkweed	Cat. 2 Nationally Threatened
<i>Hyoscyamus niger</i>	Henbane	Cat. 2 Nationally Threatened
<i>Hypericum montanum</i>	Pale St. John's-wort	Cat. 2 Nationally Threatened
<i>Juncus compressus</i>	Round-fruited Rush	Cat. 2 Nationally Threatened
<i>Lithospermum arvense</i>	Field Gromwell	Cat. 2 Nationally Threatened
<i>Mentha pulegium</i>	Pennyroyal	Cat. 2 Nationally Threatened
<i>Minuartia hybrida</i>	Fine-leaved Sandwort	Cat. 2 Nationally Threatened
<i>Minuartia verna</i>	Spring Sandwort	Cat. 2 Nationally Threatened

Scientific Name	Common Name	Derbyshire Red List Category
<i>Monotropa hypopitys</i>	Yellow Bird's-nest	Cat. 2 Nationally Threatened
<i>Mysiophyllum verticillatum</i>	Whorled Water-milfoil	Cat. 2 Nationally Threatened
<i>Neottia nidus-avis</i>	Bird's-nest Orchid	Cat. 2 Nationally Threatened
<i>Nepeta cataria</i>	Cat-mint	Cat. 2 Nationally Threatened
<i>Oenanthe fistulosa</i>	Tubular Water-dropwort	Cat. 2 Nationally Threatened
<i>Ophrys insectifera</i>	Fly Orchid	Cat. 2 Nationally Threatened
<i>Orchis morio</i>	Green-winged Orchid	Cat. 2 Nationally Threatened
<i>Orchis ustulata</i>	Burnt Orchid	Cat. 2 Nationally Threatened
<i>Orobanche purpurea</i>	Yarrow Broomrape	Cat. 2 Nationally Threatened
<i>Papaver argemone</i>	Prickly Poppy	Cat. 2 Nationally Threatened
<i>Persicaria minor</i>	Small Water-pepper	Cat. 2 Nationally Threatened
<i>Platanthera bifolia</i>	Lesser Butterfly-orchid	Cat. 2 Nationally Threatened
<i>Platanthera chlorantha</i>	Greater Butterfly-orchid	Cat. 2 Nationally Threatened
<i>Polemonium caeruleum</i>	Jacob's-ladder	Cat. 2 Nationally Threatened
<i>Potamogeton compressus</i>	Grass-wrack Pondweed	Cat. 2 Nationally Threatened
<i>Potamogeton friesii</i>	Flat-stalked Pondweed	Cat. 2 Nationally Threatened
<i>Potamogeton praelongus</i>	Long-stalked Pondweed	Cat. 2 Nationally Threatened
<i>Potentilla argentea</i>	Hoary Cinquefoil	Cat. 2 Nationally Threatened
<i>Pyrola rotundifolia</i> ssp. <i>rotundifolia</i>	Round-leaved Wintergreen	Cat. 2 Nationally Threatened
<i>Ranunculus arvensis</i>	Corn Buttercup	Cat. 2 Nationally Threatened
<i>Rubus durescens</i>	a bramble	Cat. 2 Nationally Threatened
<i>Saxifraga hypnoides</i>	Mossy Saxifrage	Cat. 2 Nationally Threatened
<i>Scandix pecten-veneris</i>	Shepherd's-needle	Cat. 2 Nationally Threatened
<i>Scleranthus annuus</i>	Annual Knawel	Cat. 2 Nationally Threatened
<i>Silene nutans</i>	Nottingham Catchfly	Cat. 2 Nationally Threatened
<i>Spiranthes spiralis</i>	Autumn Lady's-tresses	Cat. 2 Nationally Threatened
<i>Stachys arvensis</i>	Field Woundwort	Cat. 2 Nationally Threatened
<i>Stellaria palustris</i>	Marsh Stitchwort	Cat. 2 Nationally Threatened
<i>Teesdalia nudicaulis</i>	Shepherd's Cress	Cat. 2 Nationally Threatened
<i>Valerianella dentata</i>	Narrow-fruited Cornsalad	Cat. 2 Nationally Threatened
<i>Viola canina</i>	Heath Dog-violet	Cat. 2 Nationally Threatened
<i>Viola tricolor</i> ssp. <i>tricolor</i>	Wild Pansy	Cat. 2 Nationally Threatened
<i>Wahlenbergia hederacea</i>	Ivy-leaved Bellflower	Cat. 2 Nationally Threatened

7) Table 3. List of Category 3 Plants - Nationally Scarce

Scientific Name	Common Name	Derbyshire Red List Category
<i>Anagallis arvensis ssp. caerulea</i>	Blue Pimpernel	Cat. 3 Nationally Scarce
<i>Bromopsis benekenii</i>	Lesser Hairy-brome	Cat. 3 Nationally Scarce
<i>Callitriche truncata</i>	Short-leaved Water-starwort	Cat. 3 Nationally Scarce
<i>Carex digitata</i>	Fingered Sedge	Cat. 3 Nationally Scarce
<i>Carex montana</i>	Soft-leaved Sedge	Cat. 3 Nationally Scarce
<i>Draba muralis</i>	Wall Whitlowgrass	Cat. 3 Nationally Scarce
<i>Epipactis atrorubens</i>	Dark-red Helleborine	Cat. 3 Nationally Scarce
<i>Epipactis phyllanthes</i>	Green-flowered Helleborine	Cat. 3 Nationally Scarce
<i>Gymnocarpium robertianum</i>	Limestone Fern	Cat. 3 Nationally Scarce
<i>Helleborus foetidus</i>	Stinking Hellebore	Cat. 3 Nationally Scarce
<i>Hordelymus europaeus</i>	Wood Barley	Cat. 3 Nationally Scarce
<i>Hornungia petraea</i>	Hutchinsia	Cat. 3 Nationally Scarce
<i>Limosella aquatica</i>	Mudwort	Cat. 3 Nationally Scarce
<i>Polygonatum odoratum</i>	Angular Solomon's-seal	Cat. 3 Nationally Scarce
<i>Potentilla crantzii</i>	Alpine Cinquefoil	Cat. 3 Nationally Scarce
<i>Potentilla neumanniana</i>	Spring Cinquefoil	Cat. 3 Nationally Scarce
<i>Ribes alpinum</i>	Mountain Currant	Cat. 3 Nationally Scarce
<i>Sesleria caerulea</i>	Blue Moor-grass	Cat. 3 Nationally Scarce
<i>Sorbus rupicola</i>	a whitebeam	Cat. 3 Nationally Scarce
<i>Thelypteris palustris</i>	Marsh Fern	Cat. 3 Nationally Scarce
<i>Thlaspi caerulescens</i>	Alpine Penny-cress	Cat. 3 Nationally Scarce
<i>Tilia platyphyllos</i>	Large-leaved Lime	Cat. 3 Nationally Scarce

8) Table 4. List of Category 4 Plants - Locally Rare

Scientific Name	Common Name	Derbyshire Red List Category
<i>Calamagrostis canescens</i>	Purple Small-reed	Cat. 4 Locally Rare
<i>Callitriche hermaphroditica</i>	Annual Water-starwort	Cat. 4 Locally Rare
<i>Carex distans</i>	Distant Sedge	Cat. 4 Locally Rare
<i>Carex elata</i>	Tufted Sedge	Cat. 4 Locally Rare
<i>Ceratophyllum submersum</i>	Soft Hornwort	Cat. 4 Locally Rare
<i>Colchicum autumnale</i>	Meadow Saffron	Cat. 4 Locally Rare
<i>Eleocharis quinqueflora</i>	Few-flowered Spike-rush	Cat. 4 Locally Rare
<i>Epipactis palustris</i>	Marsh Helleborine	Cat. 4 Locally Rare
<i>Equisetum hyemale</i>	Rough Horsetail	Cat. 4 Locally Rare
<i>Eriophorum latifolium</i>	Broad-leaved Cottongrass	Cat. 4 Locally Rare
<i>Euphorbia amygdaloides</i>	Wood Spurge	Cat. 4 Locally Rare
<i>Fumaria capreolata</i>	White Ramping-fumitory	Cat. 4 Locally Rare
<i>Geranium sylvaticum</i>	Wood Crane's-bill	Cat. 4 Locally Rare
<i>Hypericum elodes</i>	Marsh St. John's-wort	Cat. 4 Locally Rare
<i>Juncus foliosus</i>	Leafy Rush	Cat. 4 Locally Rare
<i>Lathyrus nissolia</i>	Grass Vetchling	Cat. 4 Locally Rare
<i>Oenanthe fluviatilis</i>	River Water-dropwort	Cat. 4 Locally Rare
<i>Orobanche rapum-genistae</i>	Greater Broomrape	Cat. 4 Locally Rare
<i>Osmunda regalis</i>	Royal Fern	Cat. 4 Locally Rare
<i>Pedicularis palustris</i>	Marsh Lousewort	Cat. 4 Locally Rare
<i>Polypodium cambricum</i>	Southern Polypody	Cat. 4 Locally Rare
<i>Ranunculus sardous</i>	Hairy Buttercup	Cat. 4 Locally Rare
<i>Samolus valerandi</i>	Brookweed	Cat. 4 Locally Rare
<i>Trientalis europaea</i>	Chickweed Wintergreen	Cat. 4 Locally Rare
<i>Trifolium fragiferum</i>	Strawberry Clover	Cat. 4 Locally Rare
<i>Ulmus plotii</i>	Plot's Elm	Cat. 4 Locally Rare
<i>Vaccinium uliginosum</i>	Bog Bilberry	Cat. 4 Locally Rare

9) Table 5. List of Category 5 Plants - Locally Scarce or Declining

Scientific Name	Common Name	Derbyshire Red List Category	Category Detail
<i>Agrimonia procera</i>	Fragrant Agrimony	Cat. 5 Locally Scarce or Declining	Locally Declining
<i>Alisma lanceolatum</i>	Narrow-leaved Water-plantain	Cat. 5 Locally Scarce or Declining	Locally Scarce
<i>Allium scorodoprasum</i>	Sand Leek	Cat. 5 Locally Scarce or Declining	Locally Scarce
<i>Alopecurus aequalis</i>	Orange Foxtail	Cat. 5 Locally Scarce or Declining	Locally Declining
<i>Anagallis tenella</i>	Bog Pimpernel	Cat. 5 Locally Scarce or Declining	Locally Declining
<i>Antennaria dioica</i>	Mountain Everlasting	Cat. 5 Locally Scarce or Declining	Locally Declining
<i>Anthriscus caucalis</i>	Bur Parsley	Cat. 5 Locally Scarce or Declining	Locally Scarce
<i>Apium inundatum</i>	Lesser Marshwort	Cat. 5 Locally Scarce or Declining	Locally Declining
<i>Arctostaphylos uva-ursi</i>	Bearberry	Cat. 5 Locally Scarce or Declining	Locally Scarce
<i>Asplenium trichomanes-ramosum</i>	Green Spleenwort	Cat. 5 Locally Scarce or Declining	Locally Declining
<i>Bromopsis erecta</i>	Upright Brome	Cat. 5 Locally Scarce or Declining	Locally Declining
<i>Callitriche hamulata sens.str.</i>	Intermediate Water-Starwort	Cat. 5 Locally Scarce or Declining	Locally Declining
<i>Callitriche obtusangula</i>	Blue-fruited Water-starwort	Cat. 5 Locally Scarce or Declining	Locally Scarce
<i>Callitriche platycarpa</i>	Various-leaved Water-starwort	Cat. 5 Locally Scarce or Declining	Locally Declining
<i>Campanula glomerata</i>	Clustered Bellflower	Cat. 5 Locally Scarce or Declining	Locally Declining
<i>Carex acuta</i>	Slender Tufted-sedge	Cat. 5 Locally Scarce or Declining	Locally Declining
<i>Carex dioica</i>	Dioecious Sedge	Cat. 5 Locally Scarce or Declining	Locally Scarce
<i>Carex disticha</i>	Brown Sedge	Cat. 5 Locally Scarce or Declining	Locally Declining
<i>Carex divulsa</i>	Grey Sedge	Cat. 5 Locally Scarce or Declining	Locally Scarce
<i>Carex hostiana</i>	Tawny Sedge	Cat. 5 Locally Scarce or Declining	Locally Declining
<i>Carex muricata ssp. lamprocarpa</i>	Prickly Sedge	Cat. 5 Locally Scarce or Declining	Locally Declining
<i>Carex pallescens</i>	Pale Sedge	Cat. 5 Locally Scarce or Declining	Locally Declining
<i>Carex strigosa</i>	Thin-spiked Wood-sedge	Cat. 5 Locally Scarce or Declining	Locally Scarce
<i>Carex vesicaria</i>	Bladder-sedge	Cat. 5 Locally Scarce or Declining	Locally Declining
<i>Catabrosa aquatica</i>	Whorl-grass	Cat. 5 Locally Scarce or Declining	Locally Scarce
<i>Circaea alpina x lutetiana (C. x intermedia)</i>	Upland Enchanter's-nightshade	Cat. 5 Locally Scarce or Declining	Locally Declining
<i>Cirsium dissectum</i>	Meadow Thistle	Cat. 5 Locally Scarce or Declining	Locally Scarce
<i>Clinopodium ascendens</i>	Common Calamint	Cat. 5 Locally Scarce or Declining	Locally Declining
<i>Dactylorhiza incarnata</i>	Early Marsh-orchid	Cat. 5 Locally Scarce or Declining	Locally Scarce
<i>Diphasiastrum alpinum</i>	Alpine Clubmoss	Cat. 5 Locally Scarce or Declining	Locally Declining
<i>Dipsacus pilosus</i>	Small Teasel	Cat. 5 Locally Scarce or Declining	Locally Declining
<i>Dryopteris carthusiana</i>	Narrow Buckler-fern	Cat. 5 Locally Scarce or Declining	Locally Declining
<i>Eleocharis acicularis</i>	Needle Spike-rush	Cat. 5 Locally Scarce or Declining	Locally Scarce
<i>Epilobium roseum</i>	Pale Willowherb	Cat. 5 Locally Scarce or Declining	Locally Declining
<i>Festuca altissima</i>	Wood Fescue	Cat. 5 Locally Scarce or Declining	Locally Scarce
<i>Festuca filiformis</i>	Fine-lvd Sheep's-fescue	Cat. 5 Locally Scarce or Declining	Locally Scarce
<i>Filago minima</i>	Small Cudweed	Cat. 5 Locally Scarce or Declining	Locally Scarce
<i>Fumaria muralis</i>	Common Ramping-fumitory	Cat. 5 Locally Scarce or Declining	Locally Scarce
<i>Gagea lutea</i>	Yellow Star-of-Bethlehem	Cat. 5 Locally Scarce or Declining	Locally Declining
<i>Galium uliginosum</i>	Fen Bedstraw	Cat. 5 Locally Scarce or Declining	Locally Declining
<i>Genista tinctoria</i>	Dyer's Greenweed	Cat. 5 Locally Scarce or Declining	Locally Declining
<i>Helleborus viridis</i>	Green Hellebore	Cat. 5 Locally Scarce or Declining	Locally Declining
<i>Hippocrepis comosa</i>	Horseshoe Vetch	Cat. 5 Locally Scarce or Declining	Locally Scarce
<i>Hottonia palustris</i>	Water-violet	Cat. 5 Locally Scarce or Declining	Locally Declining
<i>Jasione montana</i>	Sheep's-bit	Cat. 5 Locally Scarce or Declining	Locally Declining

Scientific Name	Common Name	Derbyshire Red List Category	Category Detail
<i>Juncus subnodulosus</i>	Blunt-flowered Rush	Cat. 5 Locally Scarce or Declining	Locally Scarce
<i>Kickxia elatine</i>	Sharp-leaved Fluellen	Cat. 5 Locally Scarce or Declining	Locally Scarce
<i>Lathyrus sylvestris</i>	Narrow-leaved Everlasting-pea	Cat. 5 Locally Scarce or Declining	Locally Scarce
<i>Legousia hybrida</i>	Venus's-looking-glass	Cat. 5 Locally Scarce or Declining	Locally Scarce
<i>Leontodon saxatilis</i>	Lesser Hawkbit	Cat. 5 Locally Scarce or Declining	Locally Declining
<i>Lepidium heterophyllum</i>	Smith's Pepperwort	Cat. 5 Locally Scarce or Declining	Locally Declining
<i>Lithospermum officinale</i>	Common Gromwell	Cat. 5 Locally Scarce or Declining	Locally Declining
<i>Lotus glaber</i>	Narrow-leaved Bird's-foot-trefoil	Cat. 5 Locally Scarce or Declining	Locally Scarce
<i>Lycopodium clavatum</i>	Stag's-horn Clubmoss	Cat. 5 Locally Scarce or Declining	Locally Declining
<i>Menyanthes trifoliata</i>	Bogbean	Cat. 5 Locally Scarce or Declining	Locally Declining
<i>Myriophyllum alterniflorum</i>	Alternate Water-milfoil	Cat. 5 Locally Scarce or Declining	Locally Scarce
<i>Oenanthe aquatica</i>	Fine-lvd Water-dropwort	Cat. 5 Locally Scarce or Declining	Locally Scarce
<i>Ononis spinosa</i>	Spiny Restharrow	Cat. 5 Locally Scarce or Declining	Locally Declining
<i>Ornithopus perpusillus</i>	Bird's-foot	Cat. 5 Locally Scarce or Declining	Locally Declining
<i>Orobanche minor</i>	Common Broomrape	Cat. 5 Locally Scarce or Declining	Locally Scarce
<i>Paris quadrifolia</i>	Herb Paris	Cat. 5 Locally Scarce or Declining	Locally Declining
<i>Pinguicula vulgaris</i>	Common Butterwort	Cat. 5 Locally Scarce or Declining	Locally Declining
<i>Poa angustifolia</i>	Narrow-lvd Meadow-grass	Cat. 5 Locally Scarce or Declining	Locally Scarce
<i>Potamogeton alpinus</i>	Red Pondweed	Cat. 5 Locally Scarce or Declining	Locally Scarce
<i>Potamogeton lucens</i>	Shining Pondweed	Cat. 5 Locally Scarce or Declining	Locally Scarce
<i>Potamogeton obtusifolius</i>	Blunt-leaved Pondweed	Cat. 5 Locally Scarce or Declining	Locally Scarce
<i>Potamogeton perfoliatus</i>	Perfoliate Pondweed	Cat. 5 Locally Scarce or Declining	Locally Declining
<i>Potentilla palustris</i>	Marsh Cinquefoil	Cat. 5 Locally Scarce or Declining	Locally Declining
<i>Ranunculus circinatus</i>	Fan-lvd Water-crowfoot	Cat. 5 Locally Scarce or Declining	Locally Declining
<i>Rorippa microphylla</i>	Narrow-fruited Water-cress	Cat. 5 Locally Scarce or Declining	Locally Declining
<i>Rubus saxatilis</i>	Stone Bramble	Cat. 5 Locally Scarce or Declining	Locally Declining
<i>Salix purpurea</i>	Purple Willow	Cat. 5 Locally Scarce or Declining	Locally Declining
<i>Scirpus sylvaticus</i>	Wood Club-rush	Cat. 5 Locally Scarce or Declining	Locally Declining
<i>Scrophularia umbrosa</i>	Green Figwort	Cat. 5 Locally Scarce or Declining	Locally Scarce
<i>Serratula tinctoria</i>	Saw-wort	Cat. 5 Locally Scarce or Declining	Locally Declining
<i>Silaum silaus</i>	Pepper-saxifrage	Cat. 5 Locally Scarce or Declining	Locally Declining
<i>Sison amomum</i>	Stone Parsley	Cat. 5 Locally Scarce or Declining	Locally Scarce
<i>Spergularia rubra</i>	Sand Spurrey	Cat. 5 Locally Scarce or Declining	Locally Declining
<i>Stellaria pallida</i>	Lesser Chickweed	Cat. 5 Locally Scarce or Declining	Locally Scarce
<i>Thalictrum flavum</i>	Common Meadow-rue	Cat. 5 Locally Scarce or Declining	Locally Declining
<i>Trifolium subterraneum</i>	Subterranean Clover	Cat. 5 Locally Scarce or Declining	Locally Scarce
<i>Triglochin palustre</i>	Marsh Arrowgrass	Cat. 5 Locally Scarce or Declining	Locally Declining
<i>Trollius europaeus</i>	Globe-flower	Cat. 5 Locally Scarce or Declining	Locally Declining
<i>Valeriana dioica</i>	Marsh Valerian	Cat. 5 Locally Scarce or Declining	Locally Declining
<i>Verbascum nigrum</i>	Dark Mullein	Cat. 5 Locally Scarce or Declining	Locally Declining
<i>Verbena officinalis</i>	Vervain	Cat. 5 Locally Scarce or Declining	Locally Scarce
<i>Veronica polita</i>	Grey Field-speedwell	Cat. 5 Locally Scarce or Declining	Locally Declining
<i>Veronica scutellata</i>	Marsh Speedwell	Cat. 5 Locally Scarce or Declining	Locally Declining
<i>Vicia sylvatica</i>	Wood Vetch	Cat. 5 Locally Scarce or Declining	Locally Scarce
<i>Zannichellia palustris</i>	Horned Pondweed	Cat. 5 Locally Scarce or Declining	Locally Declining

10) Table 6. List of Category 6 Plants - Locally Extinct

Scientific Name	Common Name	Derbyshire Red List Category
<i>Asperula cynanchica</i>	Squinancywort	Cat. 6 Locally Extinct
<i>Campanula patula</i>	Spreading Bellflower	Cat. 6 Locally Extinct
<i>Carex diandra</i>	Lesser Tussock-sedge	Cat. 6 Locally Extinct
<i>Cephalanthera damasonium</i>	White Helleborine	Cat. 6 Locally Extinct
<i>Cryptogramma crispa</i>	Parsley Fern	Cat. 6 Locally Extinct
<i>Cypripedium calceolus</i>	Lady's-slipper	Cat. 6 Locally Extinct
<i>Drosera anglica</i>	Great Sundew	Cat. 6 Locally Extinct
<i>Dryas octopetala</i>	Mountain Avens	Cat. 6 Locally Extinct
<i>Dryopteris oreades</i>	Mountain Male Fern	Cat. 6 Locally Extinct
<i>Eleocharis multicaulis</i>	Many-stalked Spike-rush	Cat. 6 Locally Extinct
<i>Gentiana pneumonanthe</i>	Marsh Gentian	Cat. 6 Locally Extinct
<i>Gentiana uliginosa</i>	Dune Gentian	Cat. 6 Locally Extinct
<i>Hieracium calcaricola</i>	a hawkweed	Cat. 6 Locally Extinct
<i>Hieracium mirandum</i>	a hawkweed	Cat. 6 Locally Extinct
<i>Hieracium scabrisetum</i>	a hawkweed	Cat. 6 Locally Extinct
<i>Hieracium subprasiniifolium</i>	a hawkweed	Cat. 6 Locally Extinct
<i>Juniperus communis</i>	Juniper	Cat. 6 Locally Extinct
<i>Listera cordata</i>	Lesser Twayblade	Cat. 6 Locally Extinct
<i>Lycopodiella inundata</i>	Marsh Clubmoss	Cat. 6 Locally Extinct
<i>Myosurus minimus</i>	Mousetail	Cat. 6 Locally Extinct
<i>Myrica gale</i>	Bog Myrtle	Cat. 6 Locally Extinct
<i>Pilosella peleteriana</i>	Shaggy Mouse-ear-hawkweed	Cat. 6 Locally Extinct
<i>Pseudorchis albida</i>	Small-white Orchid	Cat. 6 Locally Extinct
<i>Ranunculus fluitans x peltatus (R. x kelchoensis)</i>	Kelso Water-crowfoot	Cat. 6 Locally Extinct
<i>Ranunculus parviflorus</i>	Small-flowered Buttercup	Cat. 6 Locally Extinct
<i>Rubus arrheniiformis</i>	a bramble	Cat. 6 Locally Extinct
<i>Rubus gratus</i>	a bramble	Cat. 6 Locally Extinct
<i>Rubus pistoris</i>	a bramble	Cat. 6 Locally Extinct
<i>Rubus plicatus</i>	a bramble	Cat. 6 Locally Extinct
<i>Schoenus nigricans</i>	Black Bog-rush	Cat. 6 Locally Extinct
<i>Selaginella selaginoides</i>	Lesser Clubmoss	Cat. 6 Locally Extinct
<i>Sium latifolium</i>	Great Water-parsnip	Cat. 6 Locally Extinct
<i>Taraxacum gelertii</i>	a dandelion	Cat. 6 Locally Extinct
<i>Utricularia vulgaris sens.lat.</i>	Greater Bladderwort	Cat. 6 Locally Extinct
<i>Valerianella rimosa</i>	Broad-fruited Cornsalad	Cat. 6 Locally Extinct

See Appendix 3 on page 18 for a complete listing of all Derbyshire's Red Data plants, irrespective of category.

11) References

- Clapham A.R. ed. (1969) ***Flora of Derbyshire***. Derby Museum.
- Cheffings, C. and Farrell, L. (2005). ***The Vascular Red Plant Data List for Great Britain*** Joint Nature Conservation Committee
- Elkington, T. & Wilmot, A. (1996) ***Endangered Wildlife in Derbyshire***. Derbyshire Wildlife Trust.
- IUCN (2001) ***IUCN Red List Categories and Criteria: Version 3.1***. IUCN Species Survival Commission. IUCN, Gland, Switzerland and Cambridge, UK. ii + 30 pp.
- Lockton, A., Whild, S. & Pearman, D. (2005). ***County Rare Plant Registers***. BSBI.
- Moyes, N.J. & Willmot, A. (2002) ***A Checklist of the Plants of Derbyshire***. Derby Museum
- Moyes, N.J. & Willmot, A. (2007) ***An Update to the Checklist of the Plants of Derbyshire***. Derby Museum.
- BSBI Website ***New Lists of British Rare Plants*** (2005);
- Stace, C.A. et al (2003) ***Vice-County Census Catalogue of the Vascular Plants of Great Britain***. BSBI
- Stewart, A., Pearman, D.A. and Preston, C.D. (1994) ***Scarce Plants in Britain***. JNCC

- 0 -

APPENDIX 1 The History of Derbyshire Red Data Lists

1996: Endangered Wildlife in Derby

Derbyshire's first Red List of vascular plants appeared in a book published by Derbyshire Wildlife Trust (Elkington & Wilmot, 1996). It made a valiant attempt at identifying those rarer plants known in less than 10 monads (1km map squares), but there simply was not enough available data on the true distribution of many species for it to be fully effective as a local Red List. For example, Cloudberry (*Rubus chamaemorus*) was included, but targeted recording has since shown it to be locally very frequent in its remote, high moorland habitat.

Despite a number of inappropriate inclusions and omissions, this work remained the only publicly accessible local Red List of Derbyshire plants until now, and has been a valuable foundation for subsequent work.

2002: Candidate Red Data Plant List

In 1994, Derby Museum began working closely with local botanists to collate Derbyshire's contribution to Atlas 2000 - a scheme to revise the national vascular plant atlas of Britain. At the same time it began work on a massive revision of the county's own Flora of Derbyshire, which had become significantly out of date. (Clapham, 1969).

Very soon the largest botanical dataset for the county had been built up. By 2002 it contained around 610,000 computerised records. Working in partnership with Derbyshire Wildlife Trust, the present authors analysed that dataset in order to select plants for inclusion in a new Red Data List. It would replace those named in Derbyshire's first Red Data Book (Elkington & Wilmot, 1996).

Despite the huge amount of new data, we still felt we had insufficient information to follow published guidelines which urged us to make selections based on local decline of a species as well as on rarity. The latter was based purely on a statistical study of the number of known 1km grid squares in the county, and "Red List" species were divided into three criteria as follows:

- Criteria 1 Species with a National or European Conservation Status
- Criteria 2 Species with 1-3 Derbyshire monads records known after 1986
- Criteria 3 Species with 4-10 Derbyshire monads records known after 1986

We called this list a "Candidate Red Data List" as it was intended only for internal use by Derby Museum and Derbyshire Wildlife Trust and for any advice given to consultants or other conservation partners. Later that year we published "A Checklist of the Plants of Derbyshire" (Moyes & Willmot, 2002). It listed every vascular plant known to have grown wild in Derbyshire, and it flagged up those species we had earlier selected as Candidate Red List plants, although there was still no single, publicly available list of Red Data species.

In 2004 the Museum circulated the individual records of these Candidate Red List species to key county conservation partners as a MapInfo GIS layer. County wildlife sites then began to be selected partly on the basis of their presence or absence.

2008: Derbyshire Red Data List and Register

In 2005 our designations of Candidate Red List plants suddenly became out of date. In that year the UK undertook a drastic revision of all national plant conservation statuses. For the very first time species were included that, although still relatively abundant in the UK, had nevertheless exhibited a significant recent decline. (Cheffings & Farrell, 2005). A large number of new additions were made, and those relevant to Derbyshire were then highlighted in an Update to The Checklist of the Plants of Derbyshire (Moyes & Willmot, 2007)

By mid-2008 the DBRC database contained c705,000 vascular plant records. Efforts had by then been made to capture other sets of Derbyshire data including old herbarium records, data from Monks Wood BRC, and red data plant records from the Wildlife Trust. Detailed comparisons had also been made with a number SSSI site files held at Natural England which showed our data holdings to be more complete and often more extensive than those held by this government agency. The time was right to revise and publish a new Red Data List of vascular plants.

Work also began in 2008 to update these statuses on the database used to create the online Flora of Derbyshire (www.derby.gov.uk/flora). But it was also clear that we needed to revisit the selection of locally rare or declining species, so Derby Museum and the Flora Group undertook this task, partly funded by a contract with Natural England. The commitment was also made to publish the online Flora accounts for the revised list of Red Data species. Although not part of that contract, it is hoped that we can soon develop this list into a full County Plant Register, giving summary details for each location, and that local naturalists with an interest in plant conservation may consider adopting particular species to monitor over the years ahead.

- o -

APPENDIX 2

Assessing Local Decline

Apparent Change

To determine which species have suffered a significant local decline in Derbyshire we have attempted to take an analytical approach by counting and comparing the number of 1km grid squares that each native species has been recorded from during two consecutive 21 year periods. (1965 - 1986 and 1987 - 2008).

This enables us to calculate an “**Apparent Change**” in grid square coverage in the current period for every species and to present it as a percentage of the number of grid squares from which records were made in the earlier 21 year period.

$$\text{“Apparent Change”} = \frac{\text{Number of monads in current 21-year time period}}{\text{Number of monads in earlier 21-year time period}} \times 100\%$$

Examples:

Ornithopus perpusillus had 11 monads in the first time period, and 6 in the second.

“Apparent Change” = 54%

Campanula glomerata had 16 monads in the first time period, and 16 in the second.

“Apparent Change” = 100%

Cirsium heterophyllum had 36 monads in the first time period, and 45 in the second.

“Apparent Change” = 125%

Helianthemum nummularium had 55 monads in the first time period, and 161 in the second.

“Apparent Change” = 292%

Cerastium glomeratum had 38 monads in the first time period, and 598 in the second.

“Apparent Change” = 1,573%

The amount of recording in these two consecutive 21-year periods has clearly not been the same; far more recording has been done in recent years than ever before. There has also been a well-reported and genuine decline in many native species and habitats in the last few decades but, despite this, we now actually hold more individual records for most species than we ever did before. This has been caused by intensive modern Flora-recording work, spurred on by the advent of data computerisation since 1994. In fact, 127,800 records were collected in the first 21 year period, compared to 563,000 between 1987 and 2008.

To gain a better impression of which species in Derbyshire have truly increased or decreased in abundance, an average of all individual “Apparent Change” figures was calculated. Our data showed an overall average increase of 542.%, i.e. a five to six-fold *apparent increase* across 881 native plants as a result of our recent recording efforts.

All critical groups, non-native plants, and those species without any modern monads have all been excluded from this calculation. In addition, only presence or absence from individual 1km grid squares has been used; no account has been taken of the loss of individual sites, nor of any decline in plant numbers within these sites. This may be something that a further revision could attempt to address.

Relative Apparent Change

By comparing the Apparent Change of any given species against the average Apparent Change for all species, we can generate a much simpler figure.

We term this: “**Relative Apparent Change**”

Any plant showing the same degree of Apparent Change as the average is said to show a “Relative Apparent Change” of 1 (e.g. *Acer campestre*, *Calluna vulgaris*).

If a species has a “Relative Apparent Change” significantly below 1.0 we can reasonably conclude that it has genuinely shown a decline in the number of sites in the current 21-year period, compared to the previous one.

A Relative Apparent Change of 0.2 has been chosen as the criterion for whether or not a Derbyshire species should be included in our Red List in the subdivision of Category 5 we term “**Locally Declining**”. Any native species demonstrating a Relative Apparent Change of less than 0.2 is now included in that Category. This reasonably harsh cut-off point for selection is equivalent to an individual “Apparent Change” of 108.2%.

The real increases seem to be amongst the weed species, with *Stellaria media*, *Triplorospermum inodorum*, *Epilobium montanum* and *Cerastium glomeratum* all showing figures for Relative Apparent Change of between 2.5 and 8.6, equivalent to an “Apparent Change” of between 1,500% to 4,600%!

- 0 -

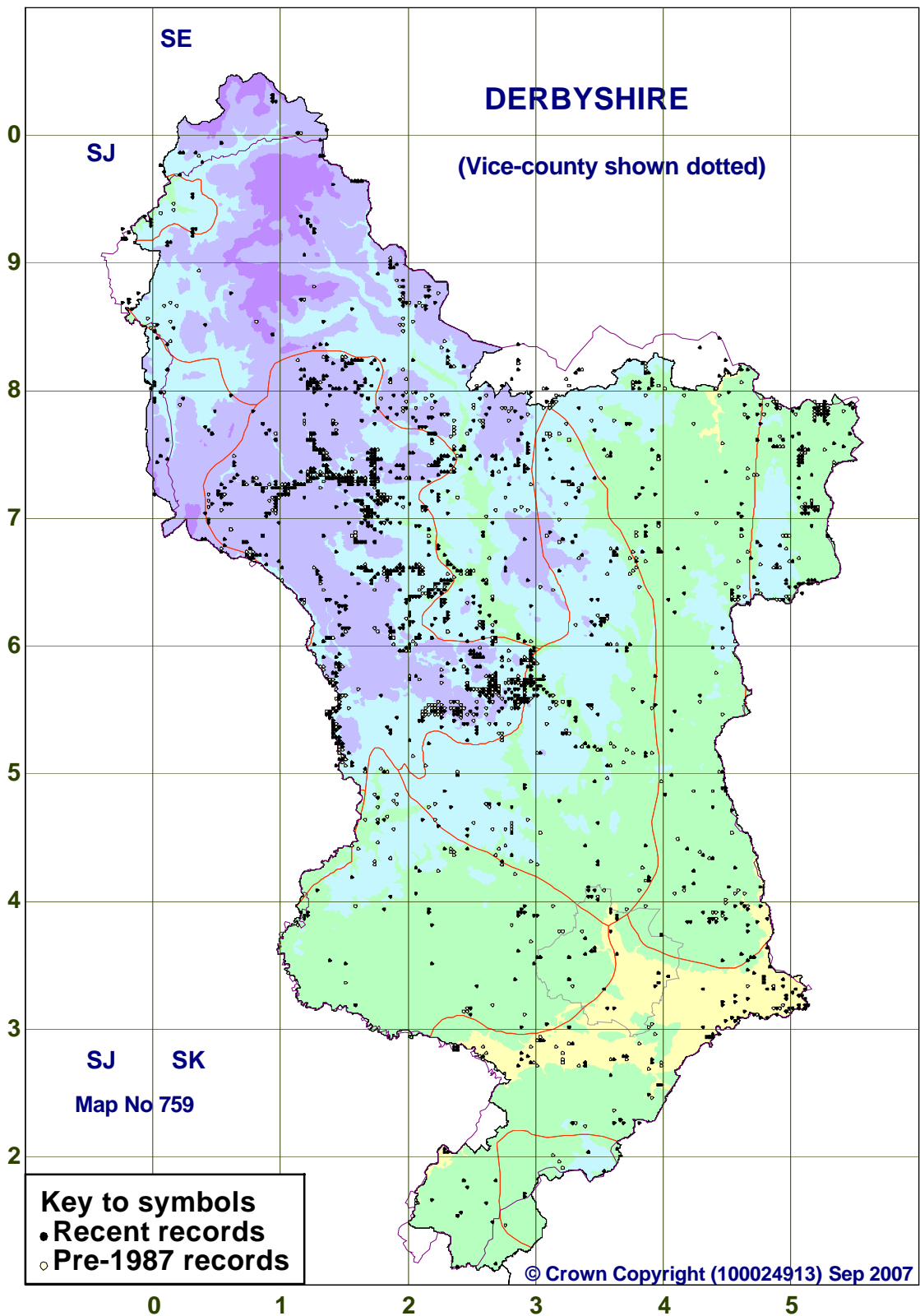


Fig 2 All Derbyshire RDB Plant Records
 Symbol Size :250m Background: Relief with Natural Area boundaries in red.
 See Fig 1 on page 4 for data plotted at 1km resolution.

APPENDIX 3

Full List of Derbyshire Red Data Plants

Scientific Name	Common Name	Derbyshire Red List Category	Category Detail	Latest Year	Monad count post-1986	Comments (e.g. secondary status if applicable)
<i>Agrimonia procera</i>	Fragrant Agrimony	Cat. 5 Locally Scarce or Declining	Locally Declining	2006	6	
<i>Alisma lanceolatum</i>	Narrow-leaved Water-plantain	Cat. 5 Locally Scarce or Declining	Locally Scarce	2004	6	
<i>Allium oleraceum</i>	Field Garlic	Cat. 2 Nationally Threatened	VU	2006	21	
<i>Allium scorodoprasum</i>	Sand Leek	Cat. 5 Locally Scarce or Declining	Locally Scarce	2003	5	
<i>Alopecurus aequalis</i>	Orange Foxtail	Cat. 5 Locally Scarce or Declining	Locally Declining	2006	10	
<i>Anagallis arvensis ssp. caerulea</i>	Blue Pimpernel	Cat. 3 Nationally Scarce		1969	0	
<i>Anagallis minima</i>	Chaffweed	Cat. 2 Nationally Threatened	NT	1969	0	
<i>Anagallis tenella</i>	Bog Pimpernel	Cat. 5 Locally Scarce or Declining	Locally Declining	2004	11	
<i>Antennaria dioica</i>	Mountain Everlasting	Cat. 5 Locally Scarce or Declining	Locally Declining	2004	10	
<i>Anthemis cotula</i>	Stinking Chamomile	Cat. 2 Nationally Threatened	VU	1977	0	4-10 monads
<i>Anthriscus caucalis</i>	Bur Parsley	Cat. 5 Locally Scarce or Declining	Locally Scarce	1995	1	
<i>Apium inundatum</i>	Lesser Marshwort	Cat. 5 Locally Scarce or Declining	Locally Declining	2002	3	
<i>Arabis glabra</i>	Tower Mustard	Cat. 2 Nationally Threatened	EN, NS, BAP2007	1985	0	4-10 monads
<i>Arctostaphylos uva-ursi</i>	Bearberry	Cat. 5 Locally Scarce or Declining	Locally Scarce	2001	8	
<i>Asperula cynanchica</i>	Squinancywort	Cat. 6 Locally Extinct		1903	0	
<i>Asplenium trichomanes ssp. pachyrachis</i>	a Maidenhair Spleenwort	Cat. 2 Nationally Threatened	NR	2007	3	
<i>Asplenium trichomanes-ramosum</i>	Green Spleenwort	Cat. 5 Locally Scarce or Declining	Locally Declining	2007	23	
<i>Baldellia ranunculoides</i>	Lesser Water-plantain	Cat. 2 Nationally Threatened	NT	2004	1	= 3 monads
<i>Blysmus compressus</i>	Flat-sedge	Cat. 2 Nationally Threatened	VU	2007	6	4-10 monads
<i>Bromopsis benekenii</i>	Lesser Hairy-brome	Cat. 3 Nationally Scarce		1998	1	= 3 monads
<i>Bromopsis erecta</i>	Upright Brome	Cat. 5 Locally Scarce or Declining	Locally Declining	2005	19	
<i>Calamagrostis canescens</i>	Purple Small-reed	Cat. 4 Locally Rare		1980	0	
<i>Callitriche hamulata sens.str.</i>	Intermediate Water-Starwort	Cat. 5 Locally Scarce or Declining	Locally Declining	1996	3	

Scientific Name	Common Name	Derbyshire Red List Category	Category Detail	Latest Year	Monad count post-1986	Comments (e.g. secondary status if applicable)
<i>Callitriche hermaphroditica</i>	Annual Water-starwort	Cat. 4 Locally Rare		2002	2	
<i>Callitriche obtusangula</i>	Blue-fruited Water-starwort	Cat. 5 Locally Scarce or Declining	Locally Scarce	2002	4	
<i>Callitriche platycarpa</i>	Various-leaved Water-starwort	Cat. 5 Locally Scarce or Declining	Locally Declining	2005	12	
<i>Callitriche truncata</i>	Short-leaved Water-starwort	Cat. 3 Nationally Scarce		2002	4	4-10 monads
<i>Campanula glomerata</i>	Clustered Bellflower	Cat. 5 Locally Scarce or Declining	Locally Declining	2004	16	
<i>Campanula patula</i>	Spreading Bellflower	Cat. 6 Locally Extinct		1930	0	Cat 2 EN; NS; UKBAP-2007
<i>Cardamine impatiens</i>	Narrow-leaved Bitter-cress	Cat. 2 Nationally Threatened	NT, NS	2008	33	
<i>Carex acuta</i>	Slender Tufted-sedge	Cat. 5 Locally Scarce or Declining	Locally Declining	2007	6	
<i>Carex diandra</i>	Lesser Tussock-sedge	Cat. 6 Locally Extinct		1889	0	Cat 2 NT
<i>Carex digitata</i>	Fingered Sedge	Cat. 3 Nationally Scarce		2006	9	
<i>Carex dioica</i>	Dioecious Sedge	Cat. 5 Locally Scarce or Declining	Locally Scarce	2004	1	
<i>Carex distans</i>	Distant Sedge	Cat. 4 Locally Rare		1996	0	
<i>Carex disticha</i>	Brown Sedge	Cat. 5 Locally Scarce or Declining	Locally Declining	2008	13	
<i>Carex divulsa</i>	Grey Sedge	Cat. 5 Locally Scarce or Declining	Locally Scarce	2008	4	
<i>Carex elata</i>	Tufted Sedge	Cat. 4 Locally Rare		1990	1	
<i>Carex ericetorum</i>	Rare Spring-sedge	Cat. 2 Nationally Threatened	VU, NS, BAP2007	1994	1	= 3 monads
<i>Carex hostiana</i>	Tawny Sedge	Cat. 5 Locally Scarce or Declining	Locally Declining	2003	3	
<i>Carex montana</i>	Soft-leaved Sedge	Cat. 3 Nationally Scarce		2004	3	4-10 monads
<i>Carex muricata ssp. lamprocarpa</i>	Prickly Sedge	Cat. 5 Locally Scarce or Declining	Locally Declining	1975	0	
<i>Carex ornithopoda</i>	Bird's-foot Sedge	Cat. 2 Nationally Threatened	NR	2008	7	4-10 monads
<i>Carex pallescens</i>	Pale Sedge	Cat. 5 Locally Scarce or Declining	Locally Declining	2004	25	
<i>Carex strigosa</i>	Thin-spiked Wood-sedge	Cat. 5 Locally Scarce or Declining	Locally Scarce	2005	7	
<i>Carex vesicaria</i>	Bladder-sedge	Cat. 5 Locally Scarce or Declining	Locally Declining	2007	19	

Scientific Name	Common Name	Derbyshire Red List Category	Category Detail	Latest Year	Monad count post-1986	Comments (e.g. secondary status if applicable)
<i>Catabrosa aquatica</i>	Whorl-grass	Cat. 5 Locally Scarce or Declining	Locally Scarce	1997	3	
<i>Cephalanthera damasonium</i>	White Helleborine	Cat. 6 Locally Extinct		1789	0	Cat 2 VU; UKBAP-2007
<i>Ceratophyllum submersum</i>	Soft Hornwort	Cat. 4 Locally Rare		2003	1	
<i>Chamaemelum nobile</i>	Chamomile	Cat. 2 Nationally Threatened	VU, BAP2007	1977	0	= 3 monads
<i>Circaea alpina x lutetiana (C. x intermedia)</i>	Upland Enchanter's-nightshade	Cat. 5 Locally Scarce or Declining	Locally Declining	1996	2	
<i>Cirsium dissectum</i>	Meadow Thistle	Cat. 5 Locally Scarce or Declining	Locally Scarce	1999	4	
<i>Clinopodium acinos</i>	Basil Thyme	Cat. 2 Nationally Threatened	VU, BAP2007	2006	9	Significant decline
<i>Clinopodium ascendens</i>	Common Calamint	Cat. 5 Locally Scarce or Declining	Locally Declining	2008	6	
<i>Coeloglossum viride</i>	Frog Orchid	Cat. 2 Nationally Threatened	VU, BAP2007	2007	44	
<i>Colchicum autumnale</i>	Meadow Saffron	Cat. 4 Locally Rare		1969	0	
<i>Cryptogramma crispa</i>	Parsley Fern	Cat. 6 Locally Extinct		1805	0	
<i>Cynoglossum officinale</i>	Hound's-tongue	Cat. 2 Nationally Threatened	NT	2006	1	4-10 monads
<i>Cypripedium calceolus</i>	Lady's-slipper	Cat. 6 Locally Extinct		1800	0	Cat 2 CR; NR; UKBAP2007
<i>Dactylorhiza incarnata</i>	Early Marsh-orchid	Cat. 5 Locally Scarce or Declining	Locally Scarce	2006	5	
<i>Daphne mezereum</i>	Mezereon	Cat. 2 Nationally Threatened	VU, NS	2005	13	
<i>Dianthus deltoides</i>	Maiden Pink	Cat. 2 Nationally Threatened	NT, NS	2007	16	
<i>Diphasiastrum alpinum</i>	Alpine Clubmoss	Cat. 5 Locally Scarce or Declining	Locally Declining	2007	7	
<i>Dipsacus pilosus</i>	Small Teasel	Cat. 5 Locally Scarce or Declining	Locally Declining	2008	17	
<i>Draba muralis</i>	Wall Whitlowgrass	Cat. 3 Nationally Scarce		2006	51	
<i>Drosera anglica</i>	Great Sundew	Cat. 6 Locally Extinct		1864	0	Cat 2 NT
<i>Dryas octopetala</i>	Mountain Avens	Cat. 6 Locally Extinct		1811	0	Cat 2 NS
<i>Dryopteris carthusiana</i>	Narrow Buckler-fern	Cat. 5 Locally Scarce or Declining	Locally Declining	2008	60	
<i>Dryopteris oreades</i>	Mountain Male Fern	Cat. 6 Locally Extinct		1855	0	

Scientific Name	Common Name	Derbyshire Red List Category	Category Detail	Latest Year	Monad count post-1986	Comments (e.g. secondary status if applicable)
<i>Eleocharis acicularis</i>	Needle Spike-rush	Cat. 5 Locally Scarce or Declining	Locally Scarce	2004	3	
<i>Eleocharis multicaulis</i>	Many-stalked Spike-rush	Cat. 6 Locally Extinct		1903	0	
<i>Eleocharis quinqueflora</i>	Few-flowered Spike-rush	Cat. 4 Locally Rare		2004	1	
<i>Epilobium roseum</i>	Pale Willowherb	Cat. 5 Locally Scarce or Declining	Locally Declining	2007	24	
<i>Epipactis atrorubens</i>	Dark-red Helleborine	Cat. 3 Nationally Scarce		2008	9	
<i>Epipactis palustris</i>	Marsh Helleborine	Cat. 4 Locally Rare		1995	1	
<i>Epipactis phyllanthes</i>	Green-flowered Helleborine	Cat. 3 Nationally Scarce		1994	1	= 3 monads
<i>Equisetum hyemale</i>	Rough Horsetail	Cat. 4 Locally Rare		2004	1	
<i>Eriophorum latifolium</i>	Broad-leaved Cottongrass	Cat. 4 Locally Rare		2004	3	
<i>Euphorbia amygdaloides</i>	Wood Spurge	Cat. 4 Locally Rare		2005	3	
<i>Euphorbia exigua</i>	Dwarf Spurge	Cat. 2 Nationally Threatened	NT	2006	20	Significant decline
<i>Euphrasia anglica</i>	an eyebright	Cat. 2 Nationally Threatened	EN, BAP2007	1996	2	
<i>Euphrasia rostkoviana ssp. rostkoviana</i>	an eyebright	Cat. 2 Nationally Threatened	VU	1995	1	
<i>Festuca altissima</i>	Wood Fescue	Cat. 5 Locally Scarce or Declining	Locally Scarce	2003	6	
<i>Festuca filiformis</i>	Fine-leaved Sheep's-fescue	Cat. 5 Locally Scarce or Declining	Locally Scarce	2003	1	
<i>Filago minima</i>	Small Cudweed	Cat. 5 Locally Scarce or Declining	Locally Scarce	2007	4	
<i>Filago vulgaris</i>	Common Cudweed	Cat. 2 Nationally Threatened	NT	2007	32	
<i>Fumaria capreolata</i>	White Ramping-fumitory	Cat. 4 Locally Rare		1969	0	
<i>Fumaria muralis</i>	Common Ramping-fumitory	Cat. 5 Locally Scarce or Declining	Locally Scarce	2003	5	
<i>Gagea lutea</i>	Yellow Star-of-Bethlehem	Cat. 5 Locally Scarce or Declining	Locally Declining	2008	18	
<i>Galeopsis angustifolia</i>	Red Hemp-nettle	Cat. 2 Nationally Threatened	CR, NS, BAP2007	2002	7	
<i>Galeopsis speciosa</i>	Large-flowered Hemp-nettle	Cat. 2 Nationally Threatened	VU	2002	13	
<i>Galium uliginosum</i>	Fen Bedstraw	Cat. 5 Locally Scarce or Declining	Locally Declining	2003	24	

Scientific Name	Common Name	Derbyshire Red List Category	Category Detail	Latest Year	Monad count post-1986	Comments (e.g. secondary status if applicable)
<i>Genista anglica</i>	Petty Whin	Cat. 2 Nationally Threatened	NT	2001	7	
<i>Genista tinctoria</i>	Dyer's Greenweed	Cat. 5 Locally Scarce or Declining	Locally Declining	2007	52	
<i>Gentiana pneumonanthe</i>	Marsh Gentian	Cat. 6 Locally Extinct		1789	0	Cat 2 NS
<i>Gentianella campestris</i>	Field Gentian	Cat. 2 Nationally Threatened	VU	2004	2	4-10 monads
<i>Gentianella uliginosa</i>	Dune Gentian	Cat. 6 Locally Extinct		1898	0	Cat 2 VU; NR; UKBAP-2007
<i>Geranium sylvaticum</i>	Wood Crane's-bill	Cat. 4 Locally Rare		1982	0	
<i>Gnaphalium sylvaticum</i>	Heath Cudweed	Cat. 2 Nationally Threatened	EN	1994	2	4-10 monads
<i>Groenlandia densa</i>	Opposite-leaved Pondweed	Cat. 2 Nationally Threatened	VU	1979	0	4-10 monads
<i>Gymnocarpium robertianum</i>	Limestone Fern	Cat. 3 Nationally Scarce		2008	29	
<i>Helleborus foetidus</i>	Stinking Hellebore	Cat. 3 Nationally Scarce		2008	16	
<i>Helleborus viridis</i>	Green Hellebore	Cat. 5 Locally Scarce or Declining	Locally Declining	2004	13	
<i>Hieracium acuminatum</i>	a hawkweed	Cat. 2 Nationally Threatened	NR	2004		
<i>Hieracium calcaricola</i>	a hawkweed	Cat. 6 Locally Extinct		1903	0	
<i>Hieracium mirandum</i>	a hawkweed	Cat. 6 Locally Extinct		1946	0	
<i>Hieracium naviense</i>	a hawkweed	Cat. 2 Nationally Threatened	NR	2006	1	
<i>Hieracium scabrisetum</i>	a hawkweed	Cat. 6 Locally Extinct		1898	0	
<i>Hieracium subprasiniifolium</i>	a hawkweed	Cat. 6 Locally Extinct		1954	0	Cat 2 NT, NR
<i>Hippocrepis comosa</i>	Horseshoe Vetch	Cat. 5 Locally Scarce or Declining	Locally Scarce	2003	3	
<i>Hordelymus europaeus</i>	Wood Barley	Cat. 3 Nationally Scarce		2007	23	
<i>Hornungia petraea</i>	Hutchinsia	Cat. 3 Nationally Scarce		2005	22	
<i>Hottonia palustris</i>	Water-violet	Cat. 5 Locally Scarce or Declining	Locally Declining	2003	7	
<i>Hyoscyamus niger</i>	Henbane	Cat. 2 Nationally Threatened	VU	2006	3	4-10 monads
<i>Hypericum elodes</i>	Marsh St. John's-wort	Cat. 4 Locally Rare		1969	0	

Scientific Name	Common Name	Derbyshire Red List Category	Category Detail	Latest Year	Monad count post-1986	Comments (e.g. secondary status if applicable)
<i>Hypericum montanum</i>	Pale St. John's-wort	Cat. 2 Nationally Threatened	NT	2007	17	
<i>Jasione montana</i>	Sheep's-bit	Cat. 5 Locally Scarce or Declining	Locally Declining	2003	8	
<i>Juncus compressus</i>	Round-fruited Rush	Cat. 2 Nationally Threatened	NT	2007	5	
<i>Juncus foliosus</i>	Leafy Rush	Cat. 4 Locally Rare		1996	1	
<i>Juncus subnodulosus</i>	Blunt-flowered Rush	Cat. 5 Locally Scarce or Declining	Locally Scarce	2005	1	
<i>Juniperus communis</i>	Juniper	Cat. 6 Locally Extinct		1884	3	
<i>Kickxia elatine</i>	Sharp-leaved Fluellen	Cat. 5 Locally Scarce or Declining	Locally Scarce	2004	2	
<i>Lathyrus nissolia</i>	Grass Vetchling	Cat. 4 Locally Rare		2007	2	
<i>Lathyrus sylvestris</i>	Narrow-leaved Everlasting-pea	Cat. 5 Locally Scarce or Declining	Locally Scarce	2001	2	
<i>Legousia hybrida</i>	Venus's-looking-glass	Cat. 5 Locally Scarce or Declining	Locally Scarce	1998	1	
<i>Leontodon saxatilis</i>	Lesser Hawkbit	Cat. 5 Locally Scarce or Declining	Locally Declining	2007	44	
<i>Lepidium heterophyllum</i>	Smith's Pepperwort	Cat. 5 Locally Scarce or Declining	Locally Declining	2003	7	
<i>Limosella aquatica</i>	Mudwort	Cat. 3 Nationally Scarce		2001	5	4-10 monads
<i>Listera cordata</i>	Lesser Twayblade	Cat. 6 Locally Extinct		1950	0	
<i>Lithospermum arvense</i>	Field Gromwell	Cat. 2 Nationally Threatened	EN	2001	2	4-10 monads
<i>Lithospermum officinale</i>	Common Gromwell	Cat. 5 Locally Scarce or Declining	Locally Declining	2007	9	
<i>Lotus glaber</i>	Narrow-leaved Bird's-foot-trefoil	Cat. 5 Locally Scarce or Declining	Locally Scarce	1997	3	
<i>Luronium natans</i>	Floating Water-plantain	Cat. 1 Internationally Rare		1973	0	= 3 monads
<i>Lycopodiella inundata</i>	Marsh Clubmoss	Cat. 6 Locally Extinct		1864	0	
<i>Lycopodium clavatum</i>	Stag's-horn Clubmoss	Cat. 5 Locally Scarce or Declining	Locally Declining	2007	16	
<i>Mentha pulegium</i>	Pennyroyal	Cat. 2 Nationally Threatened	EN, NS, BAP2007	1981	1	4-10 monads
<i>Menyanthes trifoliata</i>	Bogbean	Cat. 5 Locally Scarce or Declining	Locally Declining	2007	26	

Scientific Name	Common Name	Derbyshire Red List Category	Category Detail	Latest Year	Monad count post-1986	Comments (e.g. secondary status if applicable)
<i>Minuartia hybrida</i>	Fine-leaved Sandwort	Cat. 2 Nationally Threatened	EN, NS, BAP2007	1997	2	4-10 monads
<i>Minuartia verna</i>	Spring Sandwort	Cat. 2 Nationally Threatened	NT, NS	2008	125	
<i>Monotropa hypopitys</i>	Yellow Bird's-nest	Cat. 2 Nationally Threatened	E, BAP2007	2005	7	4-10 monads
<i>Myosurus minimus</i>	Mousetail	Cat. 6 Locally Extinct		1903	0	Cat 2 VU
<i>Myrica gale</i>	Bog Myrtle	Cat. 6 Locally Extinct		1789	0	
<i>Myriophyllum alterniflorum</i>	Alternate Water-milfoil	Cat. 5 Locally Scarce or Declining	Locally Scarce	1997	4	
<i>Myriophyllum verticillatum</i>	Whorled Water-milfoil	Cat. 2 Nationally Threatened	VU	2005	2	4-10 monads
<i>Neottia nidus-avis</i>	Bird's-nest Orchid	Cat. 2 Nationally Threatened	NT	2004	10	
<i>Nepeta cataria</i>	Cat-mint	Cat. 2 Nationally Threatened	VU	2003	6	4-10 monads
<i>Oenanthe aquatica</i>	Fine-leaved Water-dropwort	Cat. 5 Locally Scarce or Declining	Locally Scarce	2002	8	
<i>Oenanthe fistulosa</i>	Tubular Water-dropwort	Cat. 2 Nationally Threatened	VU, BAP2007	2002	11	
<i>Oenanthe fluviatilis</i>	River Water-dropwort	Cat. 4 Locally Rare		2006	1	
<i>Ononis spinosa</i>	Spiny Restharrow	Cat. 5 Locally Scarce or Declining	Locally Declining	2008	14	
<i>Ophrys insectifera</i>	Fly Orchid	Cat. 2 Nationally Threatened	VU, BAP2007	2004	13	
<i>Orchis morio</i>	Green-winged Orchid	Cat. 2 Nationally Threatened	NT	2003	2	Significant decline
<i>Orchis ustulata</i>	Burnt Orchid	Cat. 2 Nationally Threatened	EN, NS, BAP2007	2007	6	Significant decline
<i>Ornithopus perpusillus</i>	Bird's-foot	Cat. 5 Locally Scarce or Declining	Locally Declining	2007	6	
<i>Orobanche minor</i>	Common Broomrape	Cat. 5 Locally Scarce or Declining	Locally Scarce	2002	2	
<i>Orobanche purpurea</i>	Yarrow Broomrape	Cat. 2 Nationally Threatened	VU, NR	1969	0	= 3 monads
<i>Orobanche rapum-genistae</i>	Greater Broomrape	Cat. 4 Locally Rare		1969	0	
<i>Osmunda regalis</i>	Royal Fern	Cat. 4 Locally Rare		1970	0	
<i>Papaver argemone</i>	Prickly Poppy	Cat. 2 Nationally Threatened	VU	2007	1	4-10 monads
<i>Paris quadrifolia</i>	Herb Paris	Cat. 5 Locally Scarce or Declining	Locally Declining	2007	7	

Scientific Name	Common Name	Derbyshire Red List Category	Category Detail	Latest Year	Monad count post-1986	Comments (e.g. secondary status if applicable)
<i>Pedicularis palustris</i>	Marsh Lousewort	Cat. 4 Locally Rare		1986	0	
<i>Persicaria minor</i>	Small Water-pepper	Cat. 2 Nationally Threatened	VU	2005	1	4-10 monads
<i>Pilosella peleteriana</i>	Shaggy Mouse-ear-hawkweed	Cat. 6 Locally Extinct		1968	0	Cat. 2 NT, NR
<i>Pinguicula vulgaris</i>	Common Butterwort	Cat. 5 Locally Scarce or Declining	Locally Declining	2007	29	
<i>Platanthera bifolia</i>	Lesser Butterfly-orchid	Cat. 2 Nationally Threatened	VU, BAP2007	1969	0	= 3 monads
<i>Platanthera chlorantha</i>	Greater Butterfly-orchid	Cat. 2 Nationally Threatened	NT	2006	6	Significant decline
<i>Poa angustifolia</i>	Narrow-leaved Meadow-grass	Cat. 5 Locally Scarce or Declining	Locally Scarce	1999	5	
<i>Polemonium caeruleum</i>	Jacob's-ladder	Cat. 2 Nationally Threatened	NR	2007	54	
<i>Polygonatum odoratum</i>	Angular Solomon's-seal	Cat. 3 Nationally Scarce		2006	2	4-10 monads
<i>Polypodium cambricum</i>	Southern Polypody	Cat. 4 Locally Rare		2003	1	
<i>Potamogeton alpinus</i>	Red Pondweed	Cat. 5 Locally Scarce or Declining	Locally Scarce	1995	1	
<i>Potamogeton compressus</i>	Grass-wrack Pondweed	Cat. 2 Nationally Threatened	EN, NS, BAP2007	2006	3	Significant decline
<i>Potamogeton friesii</i>	Flat-stalked Pondweed	Cat. 2 Nationally Threatened	NT, NS	1991	1	4-10 monads
<i>Potamogeton lucens</i>	Shining Pondweed	Cat. 5 Locally Scarce or Declining	Locally Scarce	2002	2	
<i>Potamogeton obtusifolius</i>	Blunt-leaved Pondweed	Cat. 5 Locally Scarce or Declining	Locally Scarce	1998	2	
<i>Potamogeton perfoliatus</i>	Perfoliate Pondweed	Cat. 5 Locally Scarce or Declining	Locally Declining	2002	7	
<i>Potamogeton praelongus</i>	Long-stalked Pondweed	Cat. 2 Nationally Threatened	NT	1990	2	4-10 monads
<i>Potentilla argentea</i>	Hoary Cinquefoil	Cat. 2 Nationally Threatened	NT	2003	7	
<i>Potentilla crantzii</i>	Alpine Cinquefoil	Cat. 3 Nationally Scarce		2004	3	= 3 monads
<i>Potentilla neumanniana</i>	Spring Cinquefoil	Cat. 3 Nationally Scarce		2007	51	
<i>Potentilla palustris</i>	Marsh Cinquefoil	Cat. 5 Locally Scarce or Declining	Locally Declining	2007	10	
<i>Pseudorchis albida</i>	Small-white Orchid	Cat. 6 Locally Extinct		1938	0	Cat 2 VU; UKBAP 2007
<i>Pyrola rotundifolia ssp. rotundifolia</i>	Round-leaved Wintergreen	Cat. 2 Nationally Threatened	NT, NS	1981	0	= 3 monads

Scientific Name	Common Name	Derbyshire Red List Category	Category Detail	Latest Year	Monad count post-1986	Comments (e.g. secondary status if applicable)
<i>Ranunculus arvensis</i>	Corn Buttercup	Cat. 2 Nationally Threatened	CR, BAP2007	1991	2	Significant decline
<i>Ranunculus circinatus</i>	Fan-leaved Water-crowfoot	Cat. 5 Locally Scarce or Declining	Locally Declining	2005	14	
<i>Ranunculus fluitans x peltatus (R. x kelchoensis)</i>	Kelso Water-crowfoot	Cat. 6 Locally Extinct		1888	0	
<i>Ranunculus parviflorus</i>	Small-flowered Buttercup	Cat. 6 Locally Extinct		1950	0	
<i>Ranunculus sardous</i>	Hairy Buttercup	Cat. 4 Locally Rare		2004	2	
<i>Ribes alpinum</i>	Mountain Currant	Cat. 3 Nationally Scarce		2007	31	
<i>Rorippa microphylla</i>	Narrow-fruited Water-cress	Cat. 5 Locally Scarce or Declining	Locally Declining	2005	19	
<i>Rubus arrheniiformis</i>	a bramble	Cat. 6 Locally Extinct		1891	0	
<i>Rubus durescens</i>	a bramble	Cat. 2 Nationally Threatened	NR	1999	4	
<i>Rubus gratus</i>	a bramble	Cat. 6 Locally Extinct		1887	0	
<i>Rubus pistoris</i>	a bramble	Cat. 6 Locally Extinct		1894	0	
<i>Rubus plicatus</i>	a bramble	Cat. 6 Locally Extinct		1889	0	
<i>Rubus saxatilis</i>	Stone Bramble	Cat. 5 Locally Scarce or Declining	Locally Declining	2008	19	
<i>Salix purpurea</i>	Purple Willow	Cat. 5 Locally Scarce or Declining	Locally Declining	2007	20	
<i>Samolus valerandi</i>	Brookweed	Cat. 4 Locally Rare		2005	1	
<i>Saxifraga hypnoides</i>	Mossy Saxifrage	Cat. 2 Nationally Threatened	VU	2005	76	
<i>Scandix pecten-veneris</i>	Shepherd's-needle	Cat. 2 Nationally Threatened	CR, BAP2007	1996	1	Significant decline
<i>Schoenus nigricans</i>	Black Bog-rush	Cat. 6 Locally Extinct		1829	0	
<i>Scirpus sylvaticus</i>	Wood Club-rush	Cat. 5 Locally Scarce or Declining	Locally Declining	2005	24	
<i>Scleranthus annuus</i>	Annual Knawel	Cat. 2 Nationally Threatened	EN, BAP2007	2004	2	Significant decline
<i>Scrophularia umbrosa</i>	Green Figwort	Cat. 5 Locally Scarce or Declining	Locally Scarce	1998	1	
<i>Selaginella selaginoides</i>	Lesser Clubmoss	Cat. 6 Locally Extinct		1805	0	
<i>Serratula tinctoria</i>	Saw-wort	Cat. 5 Locally Scarce or Declining	Locally Declining	2007	28	

Scientific Name	Common Name	Derbyshire Red List Category	Category Detail	Latest Year	Monad count post-1986	Comments (e.g. secondary status if applicable)
<i>Sesleria caerulea</i>	Blue Moor-grass	Cat. 3 Nationally Scarce		2007	1	= 3 monads
<i>Silaum silaus</i>	Pepper-saxifrage	Cat. 5 Locally Scarce or Declining	Locally Declining	2002	8	
<i>Silene nutans</i>	Nottingham Catchfly	Cat. 2 Nationally Threatened	NT, NS	2006	24	
<i>Sison amomum</i>	Stone Parsley	Cat. 5 Locally Scarce or Declining	Locally Scarce	2003	3	
<i>Sium latifolium</i>	Great Water-parsnip	Cat. 6 Locally Extinct		1923	0	Cat 2 EN; NS; UKBAP2007
<i>Sorbus rupicola</i>	a whitebeam	Cat. 3 Nationally Scarce		2007	23	
<i>Spergularia rubra</i>	Sand Spurrey	Cat. 5 Locally Scarce or Declining	Locally Declining	2007	22	
<i>Spiranthes spiralis</i>	Autumn Lady's-tresses	Cat. 2 Nationally Threatened	NT	1969	0	
<i>Stachys arvensis</i>	Field Woundwort	Cat. 2 Nationally Threatened	VU	2007	25	
<i>Stellaria pallida</i>	Lesser Chickweed	Cat. 5 Locally Scarce or Declining	Locally Scarce	1973	0	
<i>Stellaria palustris</i>	Marsh Stitchwort	Cat. 2 Nationally Threatened	VU	1998	13	
<i>Taraxacum gelertii</i>	a dandelion	Cat. 6 Locally Extinct		1918	0	
<i>Teesdalia nudicaulis</i>	Shepherd's Cress	Cat. 2 Nationally Threatened	NT	1984	1	= 3 monads
<i>Thalictrum flavum</i>	Common Meadow-rue	Cat. 5 Locally Scarce or Declining	Locally Declining	2005	14	
<i>Thelypteris palustris</i>	Marsh Fern	Cat. 3 Nationally Scarce		2003	1	= 3 monads
<i>Thlaspi caerulescens</i>	Alpine Penny-cress	Cat. 3 Nationally Scarce		2007	45	
<i>Tilia platyphyllos</i>	Large-leaved Lime	Cat. 3 Nationally Scarce		2007	56	
<i>Trichomanes speciosum</i>	Killarney Fern	Cat. 1 Internationally Rare		1991	2	= 3 monads
<i>Trientalis europaea</i>	Chickweed Wintergreen	Cat. 4 Locally Rare		2003	1	
<i>Trifolium fragiferum</i>	Strawberry Clover	Cat. 4 Locally Rare		1979	0	
<i>Trifolium subterraneum</i>	Subterranean Clover	Cat. 5 Locally Scarce or Declining	Locally Scarce	2007	3	
<i>Triglochin palustre</i>	Marsh Arrowgrass	Cat. 5 Locally Scarce or Declining	Locally Declining	2006	26	
<i>Trollius europaeus</i>	Globe-flower	Cat. 5 Locally Scarce or Declining	Locally Declining	2008	24	

Scientific Name	Common Name	Derbyshire Red List Category	Category Detail	Latest Year	Monad count post-1986	Comments (e.g. secondary status if applicable)
<i>Ulmus plotii</i>	Plot's Elm	Cat. 4 Locally Rare		1969	0	
<i>Utricularia vulgaris sens.lat.</i>	Greater Bladderwort	Cat. 6 Locally Extinct		1889	0	
<i>Vaccinium uliginosum</i>	Bog Bilberry	Cat. 4 Locally Rare		2004	1	
<i>Valeriana dioica</i>	Marsh Valerian	Cat. 5 Locally Scarce or Declining	Locally Declining	2007	37	
<i>Valerianella dentata</i>	Narrow-fruited Cornsalad	Cat. 2 Nationally Threatened	EN	1977	0	4-10 monads
<i>Valerianella rimosa</i>	Broad-fruited Cornsalad	Cat. 6 Locally Extinct		1903	0	Cat 2 EN; NS; UKBAP2007
<i>Verbascum nigrum</i>	Dark Mullein	Cat. 5 Locally Scarce or Declining	Locally Declining	2008	15	
<i>Verbena officinalis</i>	Vervain	Cat. 5 Locally Scarce or Declining	Locally Scarce	1998	3	
<i>Veronica polita</i>	Grey Field-speedwell	Cat. 5 Locally Scarce or Declining	Locally Declining	1999	10	
<i>Veronica scutellata</i>	Marsh Speedwell	Cat. 5 Locally Scarce or Declining	Locally Declining	2008	9	
<i>Vicia sylvatica</i>	Wood Vetch	Cat. 5 Locally Scarce or Declining	Locally Scarce	2001	7	
<i>Viola canina</i>	Heath Dog-violet	Cat. 2 Nationally Threatened	NT	1989	10	
<i>Viola tricolor ssp. tricolor</i>	Wild Pansy	Cat. 2 Nationally Threatened	NT	1999	2	
<i>Wahlenbergia hederacea</i>	Ivy-leaved Bellflower	Cat. 2 Nationally Threatened	NT	2004	14	Significant decline
<i>Zannichellia palustris</i>	Horned Pondweed	Cat. 5 Locally Scarce or Declining	Locally Declining	2004	12	

- End -

DERBY CITY COUNCIL



Produced by Derby City Council's Museums Service
and the Derbyshire Flora Group under contract to Natural England.
www.derby.gov.uk/flora